



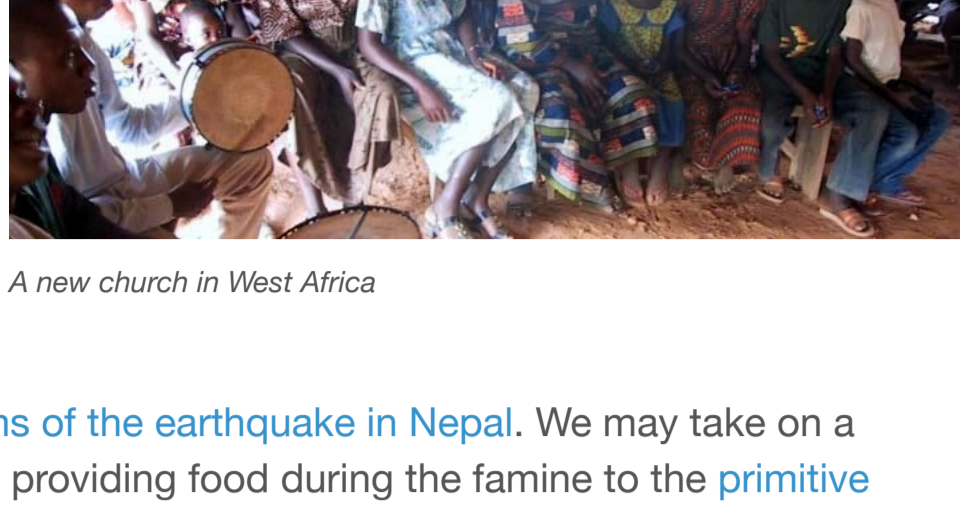
# Christ In You

## The Biggest Mission “Bang for the Buck”

Recently one of our readers asked how contributions to *Christ in You* are used. I thought there may be others who wonder the same thing, so I want to devote this newsletter to that topic.

As you know, our chief purpose of *Christ in You* is to support evangelism and church planting in underserved areas of the world. Currently we are working in Africa and India.

Donations to *Christ in You* are used for evangelism, church planting, and pastor support in unreached and under-developed regions of the world. Occasionally we will also support special needs, such as the [recent relief for the victims of the earthquake in Nepal](#). We may take on a special projects, such as providing food during the famine to the [primitive villages where we started churches in northern Benin in West Africa](#). Or we may help the development of a Christian school, as we have mentioned in a [recent newsletter](#).



A new church in West Africa

Every penny that you donate goes directly to the ministry. Nothing is taken out for overhead. We have a contributor who takes care of the small overhead expenses that we have.

Therefore we can assure that 100% of all donations are going for direct ministry. Nothing is held back for administrative costs or overhead of any kind.



I like to say that there is no better “bang for the buck” in terms of missions anywhere else. Perhaps like me you have been asked to support American missionaries going overseas. They have to spend months learning the culture – even years learning the language.

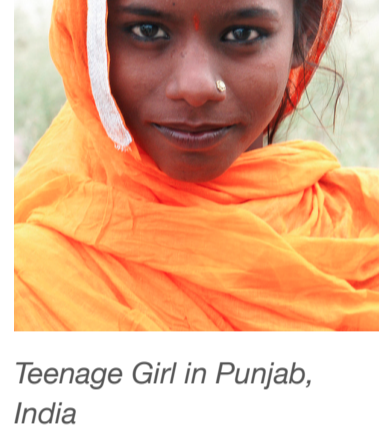
They have to raise perhaps \$100,000 a year or more for a family. This week a young woman I know is raising money to go on a mission outreach in Eastern Europe for a year. She is single but she still needs to raise \$40,000.

Now I’m not saying that it’s wrong to raise money as an American to do mission work in a foreign country. In fact, if God calls you to do that you better do it!



This was the first Sunday morning worship service in Nenebou following the open-air meetings. The man on the right with the microphone is Pastor Peter who could speak the local native language. With him wearing the blue shirt is the village chief.

All things being equal however, we can support 20 to 40 local pastors for the cost of one American that we send overseas. The local pastor knows the customs, knows the language, and has been called to minister in his own country. There’s no better use for our money than to help such a pastor. In some villages a pastor can be supported for \$200 a month. Sometimes even less. Holding an open-air evangelistic meeting in North India will typically cost about \$2,000. Such a meeting will typically yield 200 to 1000 new believers. Often a new church is formed from the new believers who emerge out of a 3 to 5 day evangelism meeting. All this for \$2,000. What a bargain!



Teenage Girl in Punjab, India

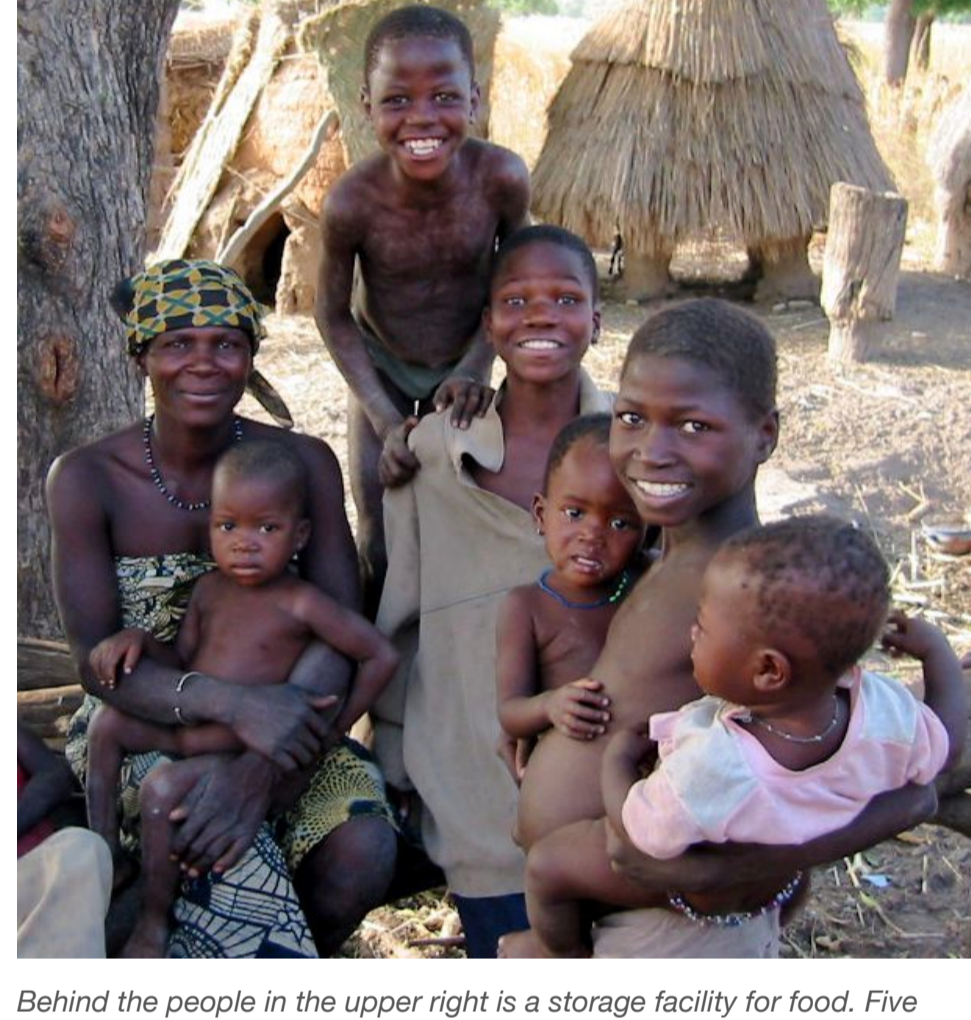


Our associate Simon Haqq on the right, greeting a woman in Punjab who became a believer at a previous evangelism meeting.

When a donation is not specified it just goes to the greatest need. Sometimes a person will donate with a specific intention and then we make sure it goes there. *Christ in You* is a 501c(3) non-profit organization. Therefore, all contributions are tax deductible.

There are many examples of how small amounts of money can have far-reaching effect.

Depending on the location, a pastor in a village can be supported with \$100 to \$200 per month. Considering the effective work that these pastors do in underserved areas and often very difficult situations, this is quite a good use of our money.



Behind the people in the upper right is a storage facility for food. Five months out of the year this village faces famine. Sometimes the food they set-aside is not enough, so we have provided assistance to help them through the year.

Perhaps a better way of supporting pastors is to invest in ways that will help them be self-supporting.

For example in Uganda pastors can be greatly assisted by having a plot of land to grow their own crops for their own families and then to sell any surplus. Typically a plot of land for this agricultural purpose would cost about \$400. Though this does not cover the entire need of a pastor’s support, it helps a great deal.

In India a cow can be bought for \$1,200. In a small village this can sometimes support a pastor and his family entirely! The milk that such a cow provides is used by the pastor’s family and much of it is sold and can often support him entirely! The good thing about this arrangement is that we don’t have to keep sending money to support the pastor – he is almost totally self-supporting at that point.



Rickshaw and Driver



Friendly Man Greeting Me in the Street In North India

We now have two active associates, one in India and one in Uganda. Since these both live in the capital cities of their countries where the cost of living is more expensive we help them a great deal in their ministry needs and often in their personal needs as well.

There are a number of other ways that we try to help support. There’s always an ongoing need for Bibles. The cost of Bibles varies from region to region, but a good estimate is approximately \$4.25 per Bible.



At a Christian Home In Punjab, North India

Sometimes there are immediate needs such as famine, earthquake relief. Though this is not part of our ongoing ministry, we do want to help out to some capacity from time to time when these urgent needs exist.

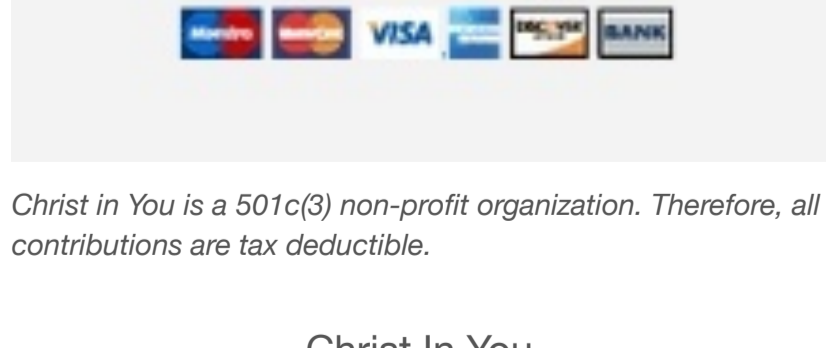
As a contributor you can specify where you would want to direct your gift. If not specified, it will be used where the need is the greatest.

I want to thank you who have been part of this ministry through your contributions and prayers. We are a very small ministry, but if I say so I believe that considering our size we have been quite successful in reaching people in remote areas of the world, by God’s grace.

The need is great, the laborers are few, your gifts and prayers are the lifeline.

God bless you.

Paul Rains



Christ in You is a 501c(3) non-profit organization. Therefore, all contributions are tax deductible.

Christ In You  
430 County Road 792  
Ellington, MO 63638  
ciyworld@gmail.com

Encouraging servants of the Lord in ministry.  
[web address: www.ciyworld.com](http://www.ciyworld.com)

Rev. Tim Richards, President  
Micah Rains, Director  
Dr. Paul Rains, Treasurer